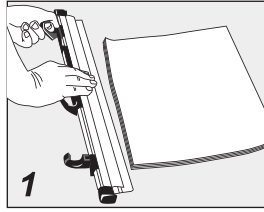


# INSTRUCTIONS FOR USE

## LOADING

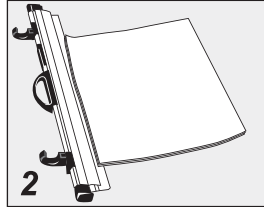
### 1. OPENING Binder

- ▶ Place binder with jaw extension on a table.
- ▶ Hold handle, and twist each cam lever upwards.
- ▶ Pull cam levers back down to "click" open.



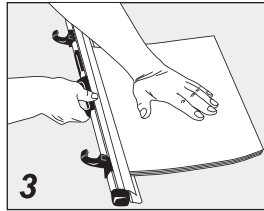
### 2. ASSEMBLING Sheets

- ▶ Assemble all sheets to be filed onto jaw extension.



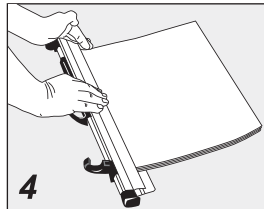
### 3. INSERTING SHEETS

- ▶ Hold sheets with one hand and slide binder forward for an easy guided entry into the clamp.



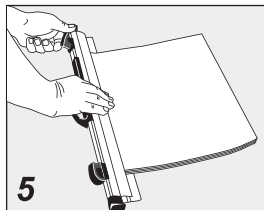
### 4. CLOSING Binder

- ▶ Tilt binder forward and press down to hold sheets in position.
- ▶ Push each cam lever forward. If too tight, rotate lever anti-clockwise and push again.



### 5. LOCKING Binder

- ▶ Twist cam lever outwards to locate under lip of base.
- ▶ If too loose, rotate levers clock-wise and relocate under lip.



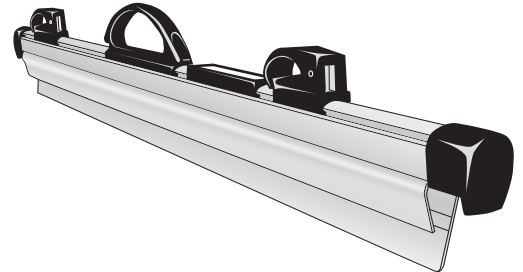
**NOTE:** Do not over tighten the cam levers

## UNLOADING

- ▶ See LOADING Step 1.
- ▶ Hold sheets and withdraw binder.

**QUICKFILE Binders are compatible with Hang-A-Plan Front Loader Trolleys, Drop Mount Systems and Wall Rack 1200.**

# FILE IT FASTER WITH QUICKFILE



**Arnos QUICKFILE binders carry a 10-year Guarantee**



*Every binder is hand assembled and tested to meet strict quality standards. If any components prove defective under normal use, they will be replaced free of charge.*

## HANG-A-PLAN QUICKFILE BINDERS

World patented cam lever action and alignment extension enable drawings to be scooped into the file and released in a fraction of the time. Open and close QUICKFILE with a "click" of a lever.

**HANG-A-PLAN**  
PLAN FILING SYSTEM

[www.hang-a-plan.com](http://www.hang-a-plan.com)

A3/A2 CAD Mobile Project File (D010)



General Front Loader Trolley (D060)

A1 Drop Mount Trolley (D052)



A1 Premium Front Loader Trolley (D055) with Systems Shelf (D056)



Front Loader Wall Rack WR1200 (D065)

